



# 54<sup>ème</sup> SEMAINE OLYMPIQUE FRANCAISE 54<sup>th</sup> SOF - FRENCH OLYMPIC WEEK 20<sup>th</sup> to 29<sup>th</sup> APRIL 2023 HYERES

Organized by the Fédération Française de Voile  
**SAILING INSTRUCTIONS**

**Including amendment #1 published on April 18th 2023**

**Amendment #1: Changes are written in red in the document**

**Instructions modified by amendement #1:**

- Addendum D Number of fleets 49ers and Addendum G Support team Vessels

## VERSION APRIL 18TH 2023

Notation [SP] or [NP] before a rule means:

[SP] denotes a rule for which a standard penalty may be applied by the race committee or technical committee without a hearing or a discretionary penalty applied by the International Jury with a hearing; (see SI 16.5).

[NP] denotes a rule that shall not be grounds for protests by a boat. This changes RRS 60.1(a)

## 1 RULES

In addition to the rules published in the NOR:

- 1.1 For Medal Races and iQFOiL Medal Series, World Sailing Appendix MR- Umpired Fleet Racing applies. Last version is available on the World Sailing website  
[https://d7qh6ksdplczd.cloudfront.net/sailing/wp-content/uploads/2022/12/12121648/Appendix-MR-Umpired-Medal-Racing\\_Jan2023.pdf](https://d7qh6ksdplczd.cloudfront.net/sailing/wp-content/uploads/2022/12/12121648/Appendix-MR-Umpired-Medal-Racing_Jan2023.pdf)
- 1.2 For Formula Kite Medal Series, Addendum FMS included as an addendum in these SI applies.
- 1.3 In RRS 44.2 insert after the first sentence: However, if Mark 1a is set, a boat may delay taking a penalty for an incident in the zone around Mark 1 or on the leg between Mark 1 and Mark 1a, until she has passed Mark 1a.

- 1.4 Only for Formula Kite and iQFOiL, add new RRS rule 27.4 as follows:
- The race committee may signal that competitors shall be on a specific tack during the 10 seconds before and 10 seconds after the starting signal is made, by displaying a green flag for starboard tack or a red flag for port tack, before or with the warning signal.
- 1.5 Only for iQFOiL Class. Add new RRS 29.3 as follows:
- When, at the warning signal, the course to the first mark is approximately ninety degrees from the true wind then:
- (a) When at the starting signal the race committee identifies a board on the course side of the starting line, the race committee shall signal a general recall.
  - (b) If the race committee acts under SI rule 1.5(a) and a board is identified, she shall be disqualified without a hearing, even if the race is abandoned. The race committee shall hail or display her sail number, and she shall leave the course area immediately. If the race is restarted or resailed, she shall not sail in it.
- 1.6 [NP] The Equipment Inspection Regulations (EIR)
- 1.7 Penalties for breaches of Class Rules and RRS 50 are [DP] if no other penalty is specified.

## 2 CHANGES TO SAILING INSTRUCTIONS

- 2.1 Any change to the schedule of races will be posted before 21.00 on the day before it will take effect and any change to the sailing instructions will be posted before 09.30 on the day it will take effect.
- 2.2 When any SI addendum is changed, an updated version of it will be posted on the Official Notice Board as part of these sailing instructions.

## 3 COMMUNICATION WITH COMPETITORS

- 3.1 Notices to competitors will be posted on the official notice board located online at:  
<https://sof.regatta.ffvoile.fr/en/default/toa/race>
- 3.2 An online system that will enable paperless submissions of hearing requests, scoring enquiries and declarations will be accessible through the Sailor account. The link to the Sailor account is:  
<https://sof.regatta.ffvoile.fr/en/default/toa/race-indexsailoraccount>

In case of failure, hearing requests paper forms will be found at and shall be delivered to the Jury office. For other submissions, boats shall contact the Race Office

- 3.3 On the water, the race committee intends to monitor and communicate with coaches on VHF radio channel described in Addendum A-Race Areas
- 3.4 Competitors and support persons may listen to the voice/video recording(s) and review the written records of their finishes. For this purpose, the race officers will be available in the race office until the end of the protest time limit for the last class on each race area.
- 3.5 [DP].Boats may be required to carry cameras, sound equipment or positioning equipment as specified by the Organizing Authority. Information from this equipment shall not be used by a boat as evidence in a hearing. This change RRS 63.6
- 3.6 The list of series concerned and installation directives will be published on the Official notice board.

## 4 [DP] CODE OF CONDUCT

- 4.1 [NP] Competitors and support persons shall comply with any reasonable request from a regatta official.
- 4.2 Boats that are on a Race Area or passing through a Race Area to which they are not assigned shall remain clear of the area where boats are racing and any official vessel.

## 5 SIGNALS MADE ASHORE

- 5.1 Signals ashore will be displayed on the flagpole located:

- at the rear the Base Nautique for 470/Nacra/ILCA 6/ILCA 7
  - near to the launching place for iQFOiL and Formula Kite and 49er/FX.
- 5.2 [NP][DP] Flag D displayed ashore with one sound means 'The warning signal will be made not less than the minutes indicated in the table in SI 5.3 after flag D is displayed or the scheduled time whichever is later.' Boats shall not to leave their berth until this signal is made.
- 5.3 When flag AP is displayed ashore, '1 minute' in race signal AP is replaced with the minutes indicated in the table below (This changes Race Signal AP):

Race areas	AP: Replace 1 minute with not less than or ...Minutes after flag D is displayed
Race Area Alpha and Bravo	20 minutes
Race Area Charlie and Delta	60 minutes
Race Area Echo and Foxtrot	30 minutes

- 5.4 Any reassignment of Events to Race Areas will be posted;
- 5.4.1 before 0930 on the day it will take effect, or
- 5.4.2 when flag AP is displayed ashore, 30 minutes before flag AP for that event or fleet is removed; or
- 5.4.3 when flag AP is displayed afloat, the course area may be changed. A race committee boat will display flag L over the event(s) flag and move to the new Race Area.
- 5.5 For Formula Kite: To indicate that competitors may sail back ashore to change equipment, Flag Kilo displayed afloat and ashore with two sounds means 'Races not started are postponed. The warning signal will be made not less than 30 minutes after Kilo was displayed unless at that time the race is postponed again or abandoned.'
- 5.6 For iQFOiL: Depending on which discipline will be sailed (Course Racing, Slalom or Marathon) the RC will display the Discipline flag ashore at least 30 minutes before Warning Signal or afloat not later than Warning Signal.

Discipline	Flag
Slalom race	Grey Flag with iQFOiL logo
Course race	Red Flag with iQFOiL logo
Marathon race	Blue Flag with iQFOiL logo

## 6 SCHEDULE OF RACES

- 6.1 The total number of races scheduled is shown in SI Addendum D.
- 6.2 One (or more for Kites and iQFOiL) extra race per day may be sailed, provided that no class becomes more than one race ahead of schedule and the change is made according to SI 2.1.
- 6.3 The daily race schedule and the scheduled time of the warning signal for the first race are shown in SI Addendum C.
- 6.4 For all classes the opening series will be extended if three races have not been completed by 28th April and the Medal Race or Medal Series will be cancelled.
- 6.5 The warning signal for each succeeding race will be made as soon as practicable.
- 6.6 To alert boats that a race or sequence of races will begin soon, the orange starting line flag will be displayed with one sound at least five (two for iQFOiL Class) minutes before a warning signal is made

## 7 CLASS FLAGS

7.1 Class flags will be class insignia on the following background:

Class	Class Insignia	Background Colour
iQFOiL Men	iQFoil	Yellow-Blue
iQFOiL Women	iQFoil	Green
ILCA 7	ILCA	White + group's colour
ILCA 6	ILCA	Green + group's colour
470 Mixed	470	White + group's colour
49er	49er	Yellow-Blue-Red
49er FX	FX	Yellow-Blue
Formula Kite Men	Formula Kite	Yellow- Blue-Pink
Formula Kite Women	Formula Kite	White -Green
Nacra 17 Mixed	Nacra 17	Blue Yellow

7.2 If a class is divided to fleets, the flag fleets will be as follow:

- Qualifying Series: Yellow, Blue and Red (Formula Kite Women White-Green)
- Final Series: Yellow-Gold, Blue-Silver and Red-Bronze (Formula Kite Women White-Gold and Green-Silver)

## 8 RACE AREAS

8.1 The race areas are shown in SI Addendum A.

8.2 For the Medal Races and Medal Series, more than one race area may be used. The locations will be posted on the official notice board in accordance with SI 2.1.

## 9 COURSES

9.1 The diagrams in SI Addendum B show the courses, the course designations, the approximate angles between legs, the order in which marks are to be passed, and the side on which each mark is to be left.

9.2 Courses will not be shortened. This changes RRS 32.

## 10 MARKS

10.1 Course marks, will be as follows:

Race Area	Marks 1, 2, 3, 4, 5 and 1A,	New Mark (SI 13.1)
Alpha	ORANGE	YELLOW
Alpha Robotic	ORANGE	ORANGE
Bravo	GREEN	YELLOW
Bravo Robotic	GREEN	GREEN
Charlie	ORANGE	GREEN
Charlie Robotic	ORANGE	ORANGE
Delta	RED	YELLOW
Echo	Cylindrical YELLOW	GREEN
Foxtrot	BLACK	YELLOW
Foxtrot Robotic	YELLOW	YELLOW

Note: some marks may have a horizontal white stripe.

10.2 The starting marks will be race committee vessels

The iQFOiL Slalom pin start will be ORANGE

10.3 The finishing marks will be a race committee vessel and a WHITE mark.

10.5 Protector mark for Formula Kite Course, will be ORANGE.

10.6 If the race committee displays Echo flag before the warning signal, the robotic marks will be used

## 11 THE START

11.1 Except for Formula Kite and iQFOiL, races will be started using RRS 26 with the warning signal made 5 minutes before the starting signal.

11.2 Formula Kite and iQFOiL RRS 26 is changed as follows:

Minutes before starting signal	Visual signal	Sound signal	Means
3	Class / fleet flag	One	Warning signal
2	Uniform or black flag	One	Preparatory signal
1	Uniform or black flag removed	One long	1 minute
0	Class or fleet flag removed	One	Starting signal

11.3 The starting line will be between staffs displaying orange flags

11.4 iQFOiL Slalom, the starting line will be between a staff displaying an orange flag and an orange mark.

11.5 [DP] A buoy may be attached to the race committee starting vessel anchor line just below keel depth. Boats shall not pass between this buoy and the race committee starting vessel at any time. This buoy is part of the race committee starting vessel ground tackle.

11.6 [DP] Boats whose warning signal has not been made shall avoid the starting area during the starting sequence for other races.

11.7 Heat number, if applicable, will be displayed before or with the warning signal without sound. This changes RRS B3.

## 12 SPARE

## 13 CHANGES OF THE NEXT LEG OF THE COURSE

13.1 To change the next leg of the course, the race committee will

- (a) move the original mark(s) if Robotic marks are in use, or lay a new mark, if non-robotic mark are in use.
- (b) move the finishing line, or
- (c) move the leeward gate. When a new mark is laid, the original mark will be removed as soon as possible. When in a subsequent change a new mark is replaced, it will be replaced by an original mark.

## 14 THE FINISH

14.1 The finishing line will be between staffs displaying blue flags on the finishing marks or between a staff displaying a blue flag and a white finishing mark.

## 15 TIME LIMITS AND TARGET TIMES

15.1 For opening series, time limits and target times in minutes are as follows:

Class	Time Limit	Mark 1 Time Limit	Finish Window	Target Time
470, ILCA 7 and ILCA 6	70	25	15	45
Nacra 17	50	20	10	30
49er and 49er FX	50	20	10	30
Formula Kite	20	6	6	12
iQFOiL Course race /Sprint slalom/marathon	21/6/90	10/1/-	5/3/30	16/4-5/60

15.2 For Medal Race or Medal Series, time limits and target times are as follows:

Class	Time Limit	Mark 1 Time Limit	Finish Window	Target Time
49er, 49er FX and Nacra 17	40	10	10	20
ILCA 6, ILCA 7 and 470	40	15	10	25
iQFOiL	12	1	3	6
Formula Kite	12	4	3	7

15.3 If no boat (Five boats for iQFOiL Slalom) has passed Mark 1 within the Mark 1 Time Limit the race will be abandoned.

15.4 Boats failing to finish within the time stated in the Finish Window after the first boat sails the course and finishes will be scored Did Not Finish. This changes RRS 35, A4 and A5.

15.5 Failure to meet the Target Time will not be grounds for redress. This changes RRS 60.1(b).

## 16 HEARING REQUESTS

16.1 Requests for a hearing shall be lodged electronically through the SailTi Sailor account at the address defined in SI 3.2 within the appropriate time limit. Alternatively, Hearing Request Forms will be available at the Jury office and may be submitted there within the appropriate time limit.

16.2 For each fleet, the protest time limit is 90 minutes (45 minutes for iQFOiL and Formula Kite Class) after the last boat has finished the last race of the day or the race committee signals AP/A or N/A, whichever is later.

16.3 Notices will be posted within 30 minutes of the protest time limit to inform competitors of hearings in which they are parties or named as witnesses. Hearings will be held in the protest room, located in the Base Nautique building beginning at the time posted. Hearings may be scheduled to begin up to 30 minutes before the end of protest time limit.

16.4 A list of boats that have been penalized under Appendix P for breaking RRS 42 and under SI 16.5 will be posted.

16.5 For breaches of SIs marked [SP], the race committee or technical committee may apply a standard penalty without a hearing. However, the race committee or technical committee may protest a boat when they consider the standard penalty to be inappropriate. A boat that has been penalised with a standard penalty shall be neither protested by another boat for the same incident nor can another boat request redress for this committee action. This changes RRS 60.1, 63.1 and Appendix A5.

16.6 On the last day of the Qualifying series, and or Opening series, or on the last scheduled day of racing, a request for reopening a hearing shall be delivered

- Within the protest time limit if the requesting party was informed of the decision on the previous day;
- No later than 30 minutes after the requesting party was informed of the decision on that day;

This changes RRS 66.2.

- 16.7 On the last day of the Qualifying series or opening series, or on the last scheduled day of racing, a request for redress based on a jury decision shall be delivered no later than 30 minutes after the decision was posted. This changes RRS 62.2.

## 17 FORMAT (IQFOIL AND FORMULA KITE SPECIFIC FORMATS SEE ADDENDUMS E AND K)

- 17.1 The format consists of an Opening series and a Medal race. If the event is split into fleets, the Opening series will be divided into a Qualifying series and a Final Series
- 17.2 If Classes are split into fleets:
- 17.2.1 The Qualifying series is scheduled for race days 1, 2 and 3 (April Monday 24<sup>th</sup>, Tuesday 25<sup>th</sup> and Wednesday 26<sup>th</sup> April).
- 17.2.2 The Final Series is scheduled for days 4 and 5 (April Thursday 27<sup>th</sup> and Friday 28<sup>th</sup> April).
- 17.2.3 The Qualifying series will be extended if fewer than 4 races are completed. If the Qualifying series is extended the whole day will be used for Qualifying series races and the series is not limited to 4 races.

### 17.3 Qualifying series

- 17.3.1 Boats will be assigned to fleets (yellow, blue or red if applicable) according with Addendum D of, as nearly as possible, equal size and ability. Initial assignments will be made by a seeding committee appointed by the race committee.
- Those assignments will be posted by 21:00 on the day before the first scheduled race for each Class.
- 17.3.2 Boats will be reassigned to fleets after each day of racing, except if on the first day fewer than two races are completed by all fleets. If all fleets have completed the same number of races, boats will be reassigned on the basis of their ranks in the series. If all fleets have not completed the same number of races, the series scores for reassignment will be calculated for those races, numbered in order of completion, completed by all fleets. Reassignments will be made as follows:

Ranking in series fleets

2 Fleets	3 Fleets
First Yellow	First Yellow
Second Blue	Second Blue
Third Blue	Third Red
Forth Yellow	Fourth Red
Fifth Yellow	Fifth Blue
Sixth Blue	Sixth Yellow
And so, on	Seventh Yellow
	And so, on

If two or more boats have the same rank, they will be entered in the left column in the order of fleets in SI 17.3.1.

- 17.3.3 Assignments will be based on the ranking available at 2100 that day regardless of protests or requests for redress not yet decided.
- 17.3.4 If all fleets have not completed the same number of races by the end of a day, the fleets with fewer races will continue racing the following day until all fleets have completed the same number of races. All boats will thereafter race in the new fleets.



#### **17.4 Final Series:**

- 17.4.1 A Final Series will be scheduled for each class with 4 (5 for 49er, 49er FX and Nacra17 Classes) or more Qualifying series races completed"
- 17.4.2 Boats will be assigned to fleets (gold, silver or bronze if applicable) according to Addendum D on the basis of their ranks in the Qualifying series. The gold fleets will have the number of boats shown in Addendum D. Boats with the best Qualifying-series ranking will race all Final Series races in the gold fleet, the next ones in the silver fleet and the next ones in the bronze fleet if applicable.
- 17.4.3 Any recalculation of Final Series ranking after boats have been assigned to gold fleets will not affect the assignments except that a redress decision may promote a boat to a higher fleet.

#### **17.5 Medal Race**

- 17.5.1 A Medal Race will be scheduled for ILCA 6, ILCA 7, 470, 49er, 49er FX and Nacra 17 with 3 or more Opening series races completed.
- 17.5.2 The ten boats ranked highest in the Opening series will be assigned to compete in the medal race.
- 17.5.3 Assignments to a Medal Race will be based on the ranking available at 0800 on the day of the medal race. The protest committee may extend the time limit.

## **18 SCORING (EXCEPT IQFOIL AND FORMULA KITE SEE ADDENDUMS E AND K)**

- 18.1 The Low Point System shall apply to all races.
- 18.2 ILCA 6, ILCA 7, Nacra 17, 470, 49er and 49er FX will have a single Medal Race. For these races RRS A4 is changed so that the points are doubled. RRS A5.2 is changed so that the scores are based on the number of boats assigned in that race and then doubled. Discretionary and standard penalties will not be doubled.
- 18.3 For all classes when fewer than three Opening series races have been completed, a boat's series score will be the total of her race scores. When three or more Opening series races have been completed, a boat's series score will be the total of her race scores excluding her worst score.
- 18.4 A boat's score shall be calculated in accordance with RRS A2, except that Medal Race or Medal score(s) shall be not excluded.
- 18.5 A boat starting later than 4 minutes after her starting signal will be scored Did Not Start without a hearing. This changes RRS A4 and A5.
- 18.6 RRS A5.2 is changed so that those scores are based on:
  - (a) The number of boats assigned to compete in a single fleet series, or
  - (b) The number of boats assigned to the largest fleet in a split fleet Qualifying series, or
  - (c) The number of boats assigned to the fleet in the Final Series, Medal Race or Medal.
- 18.7 If at the end of the Qualifying series some boats have more race scores than others, scores for the most recent races will be excluded so that all boats have the same number of race scores.
- 18.8 The boats competing in the Medal Race shall be scored highest in the regatta.

The boats competing in the Gold Fleet shall be scored higher in the regatta than boats competing in the Silver fleet. The boats competing in the Silver Fleet shall be scored higher in the regatta than boats competing in the Bronze fleet. This may not apply to a boat disqualified under RRS 6 or 69.
- 18.9 RRS A8 is changed as follows:
  - 18.9.1 For boats competing in the medal race, ties in the regatta score are broken by applying RRS A8.2 to the medal race score(s). If a tie remains, ties in the regatta score are broken by applying RRS A8.2 to the Opening series scores.
  - 18.9.2 Ties in a split fleet Final Series are broken in accordance with RRS A8.2. Ties in a split fleet Qualifying series or a single fleet Opening series shall be broken in accordance with RRS A8.



- 18.10 A boat assigned to compete in the medal race shall make a genuine effort to start, sail the course and finish. The penalty for a breach of this sailing instruction will be ranked the boat tenth in the regatta. If there are two such boats, they will be ranked ninth and tenth, (in order of their Opening-series ranks, and so on). This changes RRS A.2.

## 19 [DP] [NP] SAFETY REGULATIONS

- 19.1 RRS 40.1 applies all the time while afloat, except iQFOiL and Formula Kite Classes, that competitors shall wear personal flotation devices when flag Y is displayed.
- 19.2 Boats not leaving the harbour for a scheduled race shall promptly notify change at the address defined in SI 3.2
- 19.3 Sign-out / Sign-in procedure will be online on the SailTi Sailor account
- 19.4 [SP] Before going on the water a crew shall sign-out starting 2 hours before the scheduled time for first warning of the day.
- 19.5 [SP] After returning ashore after the races and within the protest time limit, a crew shall sign-in.
- 19.6 Standard Penalties applied by the Race Committee:

SAILING INSTRUCTIONS	
19.5 Sign Out procedure before racing	1 point in the first race of the day.
19.6 Sign In after racing	1 point in the last race of the day.

- 19.7 A boat that retires from racing shall notify the race committee before leaving the racing area, or if that is not possible, shall notify at the address defined in SI 3.2 as soon as possible after returning ashore.
- 19.8 In accordance with NoR 13 all boats shall return to and remain in their assigned berths.
- 19.9 Boats that, for any reason, arrive ashore far from its launching place and that cannot reach their assigned berths by their own means, shall promptly notify the Race Office, by telephone at the following number: +33 6 60 04 81 02

## 20.[DP] REPLACEMENT OF CREW OR EQUIPMENT

- 20.1 Substitution of competitors will not be allowed without prior written approval of the race committee and shall comply with any restrictions in the Notice of Race.
- 20.2 Substitution of damaged or lost equipment is not allowed unless authorized in writing by the Technical Committee. Requests for substitution shall be made to the committee at the first reasonable opportunity, which may be after the race.
- 20.3 Substitutions shall be lodged electronically on SailTi at the address defined in SI 3.2

## 21 [DP] EQUIPMENT AND MEASUREMENT CHECKS

- 21.1 A boat or equipment may be inspected at any time for compliance with the class rules, notice of race and sailing instructions.
- 21.2 [DP] When instructed by a race official on the water, a boat shall proceed to a designated area for inspection.
- 21.3 Only registered equipment shall be used.

## 22 OFFICIAL VESSELS

22.1 Official vessels will be marked as follows:

- Race Committee vessels White flags with the area letter
- Safety vessels Red flag written "Leader Surveillance", or ribbon, same colour as on the sailing areas described in the Addendum A map
- PRO White flag written "PRO"
- Equipment Inspection White flag with letter M
- Jury/Judges Yellow flag written "Jury"
- Media White flag written "Presse", "Video", "Photo"

22.2 Actions by official vessels or helicopters/drones shall not be grounds for requesting redress by a boat. This changes RRS 60.1(b).

## 23 [DP] SUPPORT TEAM VESSELS AND SPECTATOR VESSELS

23.1 Addendum G – Support Team Regulations shall apply to all support vessels.

23.2 Addendum G - Support Team Regulations Parts 4 and 5 shall also apply to spectator vessels.

## 24 [DP] [NP] IDENTIFICATION AND ADVERTISING WHILE RACING

24.1 When provided by the organizing authority, boats or competitors shall carry, display or wear the following as instructed:

- Bibs for all competitors for Formula Kite
- Coloured bibs for Event leaders (1<sup>st</sup>, 2<sup>nd</sup>, 3<sup>rd</sup>)
- Coloured ribbons for split fleets

## 25 [DP] TRASH DISPOSAL

25.1 Sailors and organizers seek to protect and restore our oceans and coastal waters. See RRS 47. Boats shall not intentionally put trash in the water. Trash may be placed aboard support and race committee boats.

## 26 PRIZES

26.1 SOF Hyeres 2023 Medals will be awarded to the top 3 boats of each event.

26.2 Medals will be awarded to the top 3 boats competing in the Elite French National championships mentioned in NOR 15

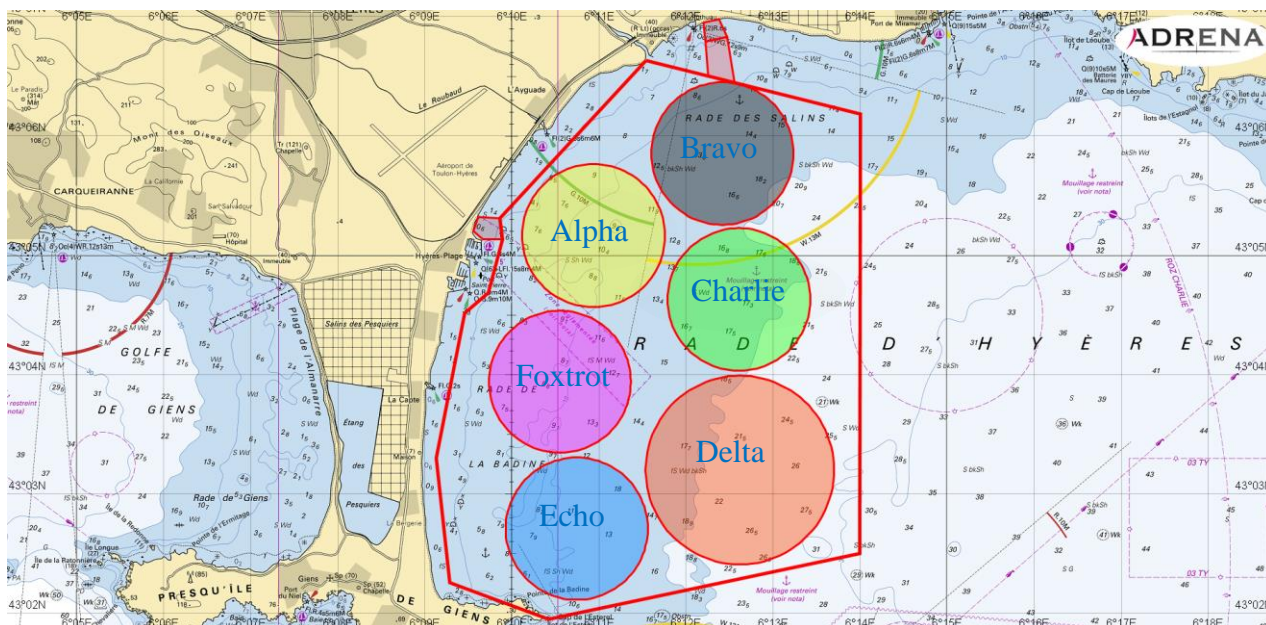
## ADDENDUM A – RACES AREA

VHF	Identification	Name	Diameter	Location
67	Yellow	Alpha-iQFOiL	1,2NM	43°05,165 N 006°10,935 E
8	Grey	Bravo-Kite	1,2NM	43°05,855 N 006°12,415 E
72	Green	Charlie-49er&FX	1,5NM	43°04,630 N 006°12,610 E
6	Red	Delta Nacra&470	1,2NM	43°03,200 N 006°12,620 E
77	Blue	Echo-ILCA	1,2NM	43°02,710 N 006°10,745 E
15	Pink	Foxtrot	1,2NM	43°03,940 N 006°10,550 E

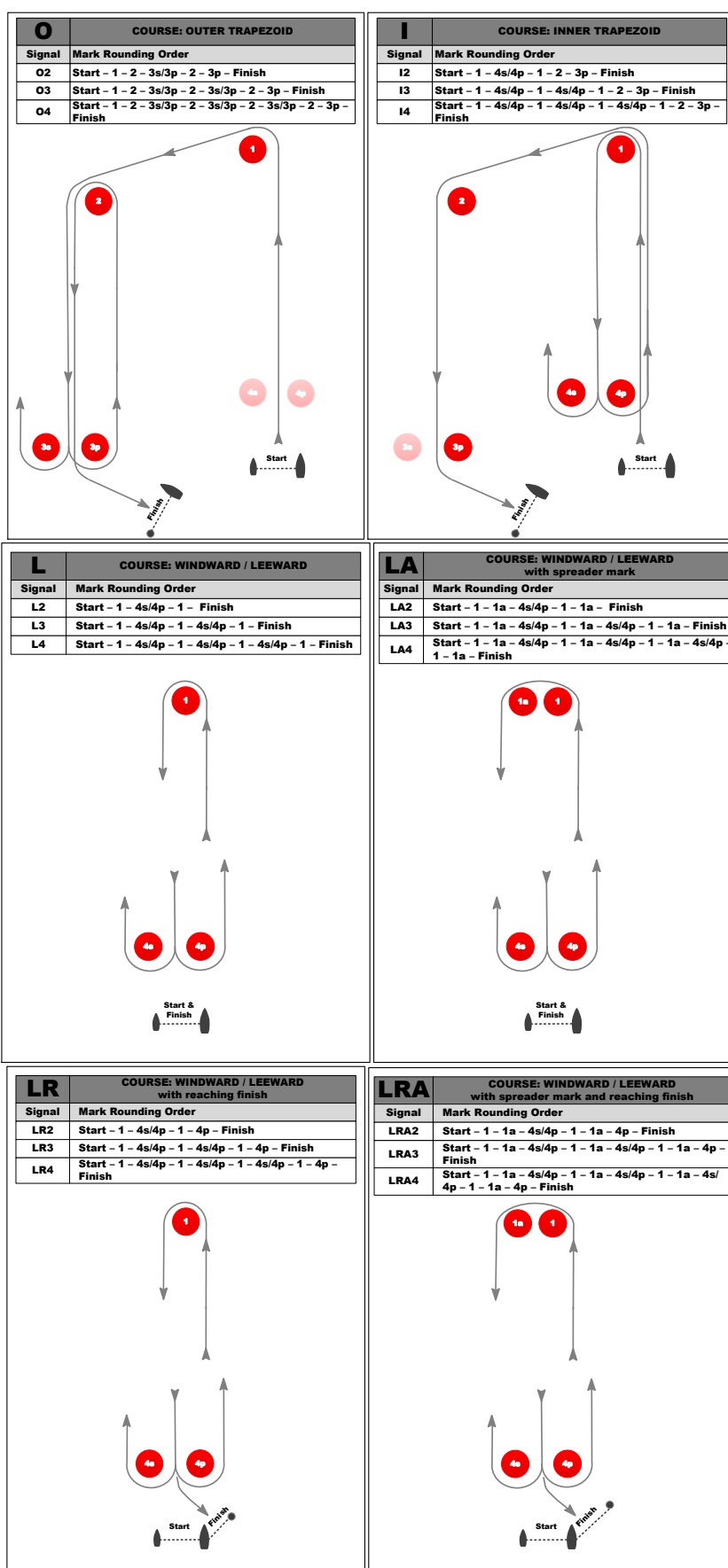
Formula Kite: The launching place may be moved according to the weather conditions

The launching beach will be located at the "Plage des Salins" 43°07,000N//006°12,200 E

<https://goo.gl/maps/CRVcpKd2BaG8KNC96>

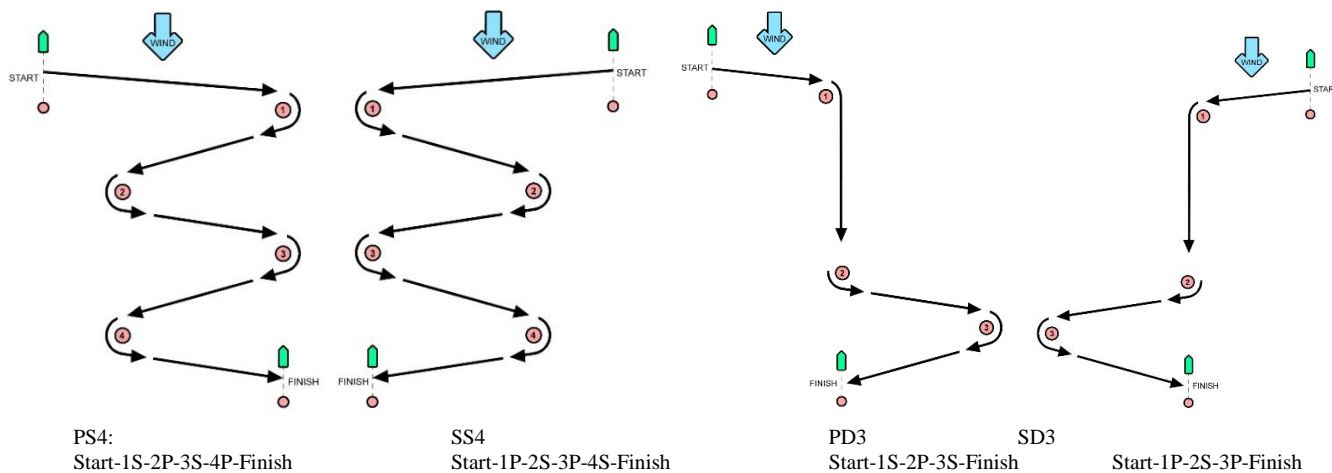


# ADDENDUM B – COURSES ILLUSTRATION

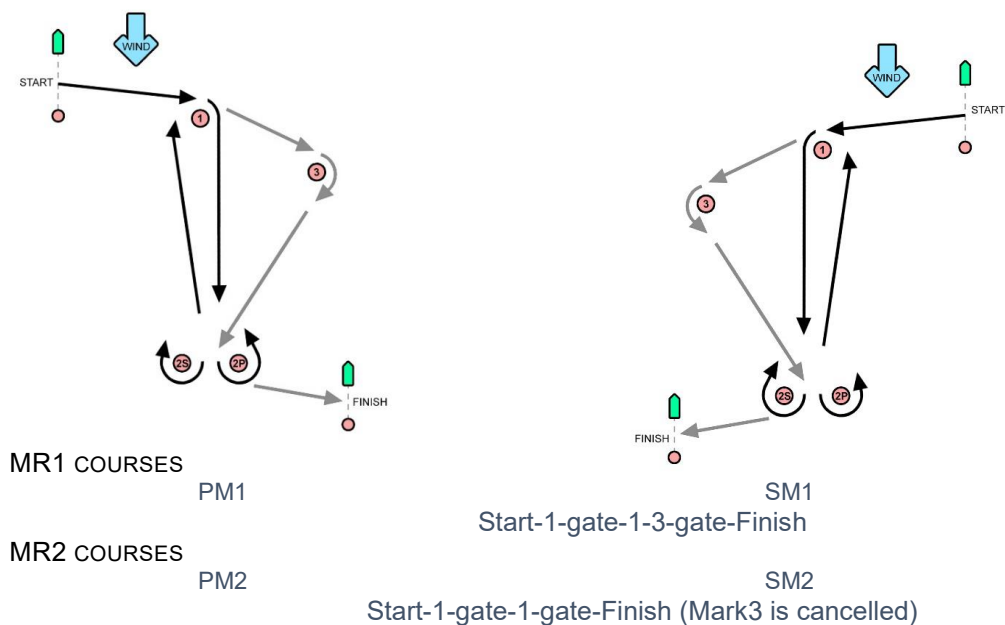


# IQFOIL SLALOM COURSES ILLUSTRATION

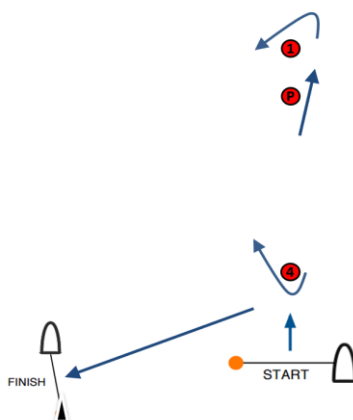
## Slalom Sprint and MR3 courses



## MR1 AND MR2

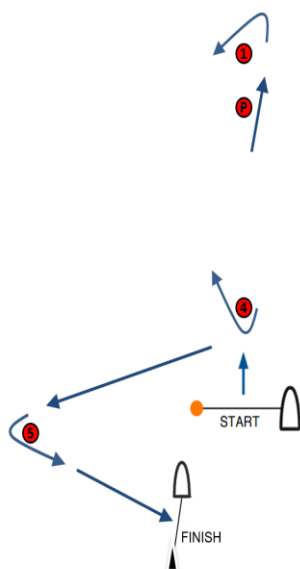


# FORMULA KITE COURSES ILLUSTRATION



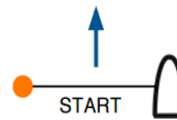
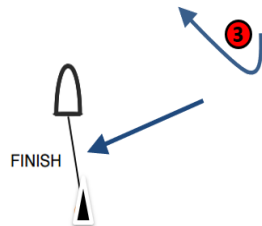
- X 1: Start – Pp – 1p – Pp – 4s – Finish
- X 2: Start – Pp – 1p – Pp – 4s – Pp – 1p – Pp – 4s – Finish
- X 3: Start – Pp – 1p – Pp – 4s – Pp – 1p – Pp – 4s – Pp – 1p – Pp – 4s – Finish

All distances and course angles are approximate.



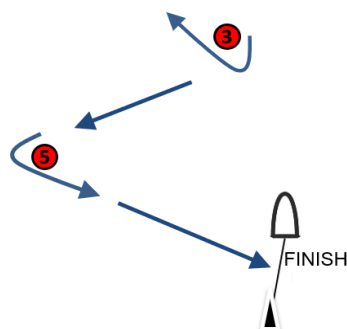
- XS 1: Start – Pp – 1p – Pp – 4s – 5p – Finish
- XS 2: Start – Pp – 1p – Pp – 4s – Pp – 1p – Pp – 4s – 5p – Finish
- XS 3: Start – Pp – 1p – Pp – 4s – Pp – 1p – Pp – 4s – Pp – 1p – Pp – 4s – 5p – Finish

All distances and course angles are approximate.



- B 1: Start – Pp – 1p – 2p – 3s – Finish
- B 2: Start – Pp – 1p – 2p – 3s – 2p – 3s – Finish
- B 3: Start – Pp – 1p – 2p – 3s – 2p – 3s – 2p – 3s – Finish

All distances and course angles are approximate.



- BS 1: Start – Pp – 1p – 2p – 3s – 5p – Finish
  - BS 2: Start – Pp – 1p – 2p – 3s – 2p – 3s – 5p – Finish
  - BS 3: Start – Pp – 1p – 2p – 3s – 2p – 3s – 2p – 3s – 5p – Finish
- All distances and course angles are approximate.



## ADDENDUM C - SCHEDULE OF RACES

- C.1 The warning signal is scheduled at 15.00 on Sunday 23<sup>rd</sup>.
- C.2 The 1<sup>st</sup> warning signal is scheduled on Monday 24<sup>th</sup> at 11.00.
- C.3 The daily scheduled of races will be posted on the ONB at 21.00 at the latest the day prior.
- C.4 Support person & team leader briefings may be held at the Base Nautique Municipale:
- The first briefing is scheduled for 08.30 on Monday, April, 24<sup>th</sup> 2023.
  - The daily briefings are scheduled every day at 09:15 from Tuesday, April 25<sup>th</sup>, (no briefing on Monday 24<sup>th</sup>).

## ADDENDUM D – FLEETS AND RACES

In addition of the SIs above,

Number of fleets, maximum number of boats in gold fleets and total number of races.

<b>53ème Semaine Olympique Française</b>	<b>Number of fleets</b>	<b>Number of Boats in the Gold Fleet</b>	<b>Total Number of Races Opening Series</b>
iQFOiL Men	1	N/A	25
iQFOiL Women	1	N/A	25
470 Mixed	2	50%	10
Formula Kite Men	3	28%	20
Formula Kite Women	2	50%	20
ILCA 7	3	33%	10
ILCA 6	2	50%	10
49er	<b>3</b>	33%	15
49er FX	2	50%	15
Nacra 17 Mixed	2	50%	15

In the case of odd number of competitors Gold fleet shall be larger than Silver fleet.

# ADDENDUM E –

## IQFOIL FORMAT AND SCORING

### FORMAT

- 1 The event consists of an Opening Series (which may include any or all of following disciplines: Course Racing, Slalom Racing, Marathon Race) and Medal Series.
- 2 The intention of the Race Committee is to sail all three disciplines throughout the event on the basis of wind conditions and forecast. The decision of which discipline is used is at the discretion of the Race Committee and will not be grounds for a request for redress. This changes RRS 60.1(b).
- 3 Men and Women shall start separately (except Marathon when they may start together).
- 4 Slalom-Heats Assignments
  - 4.1 Boards will be assigned to sprint slalom heats based on the number of entries.
  - 4.2 The fleet will be divided into equal heats of up to a maximum 25 (twenty-five) competitors.
  - 4.3 Initially boards will be assigned to heats, as nearly as possible, of equal size and ability according to their WS ranking, and finally in random order
  - 4.4 Boards will be reassigned to heats after each day of racing and the reassignment will be as follow:
    - 4.4.1 For the first two sprint slalom of the day based on the below table:

Rank in Series/rank in group	Heat Assignment (2 heat format)	Heat Assignment (3 heat format)
First	Heat 1	Heat 1
Second	Heat 2	Heat 2
Third	Heat 2	Heat 3
Fourth	Heat 1	Heat 3
Fifth	Heat 1	Heat 2
Sixth	Heat 2	Heat 1
Seventh	Heat 2	Heat 1
Eight	Heat 1	Heat 2

- 4.4.2 For the third and onwards sprint slalom of the day will be based on following formula:

Two heat format	ABBA-BAAB
Three heat format	ABCCBA-CBAABC

If two or more boards have the same rank, they will be entered in the left column in the order of fleets.

- 5 Assignments to fleets/heats will be based on the ranking available at 2100 that day regardless of protests or requests for redress not yet decided.
- 6 Medal Series
  - 6.1 The first 10 overall ranked boards from the Opening Series shall advance to the Medal Series.
  - 6.2 The Medal Series will consist in a Quarter Final, Semi Final and Grand Final.

### SCORING

- 7.1 A minimum of One race are required for a valid Series.
- 7.2 A race will be scored as follows:
  - 7.2.1 A Course racing race will be scored as one race in a Series;
  - 7.2.2 A Sprint Slalom Round (each class or fleet has sailed one Heat) will be scored as one race in a

Series. When the class or fleet is divided into the Heats, the boards will be scored as follows:

Finishing Position	Score	Finishing Position	Score
1	1	14	27
2	3	15	29
3	5	16	31
4	7	17	33
5	9	18	35
6	11	19	37
7	13	20	39
8	15	21	41
9	17	22	43
10	19	23	45
11	21	24	47
12	23	25	49
13	25		

7.2.3 If the Marathon is raced in the Qualifying series, the boards finishing position will be divided by the number of fleets in the class and applied to each of these two races. If the marathon is raced in the Final Series, the score will be the boards finishing position and applied to each of the two races.

7.3 A competitor's series score will be the total of her race scores excluding her worst score(s) as follows:

7.3.1 When racing in a single fleet:

Opening Series Races	Discards	Comments
1-2	0	No discard
3-7	1	One worst score discarded
8-12	2	Two worst scores discarded
13-17	3	Three worst scores discarded
18 or more	4	Four worst scores discarded

7.3.2 When racing in a split fleet

Qualifying Series Races	Discards	Comments
1-2	0	No discard
3-7	1	One worst score discarded in Qualifying Series
8-10	2	Two worst scores discarded in Qualifying Series
Final Series Races	Discards	Comments
1-2	0	No discard
3-7	1	One worst score in Final Series discarded
8 or more	2	Two worst scores in Final Series discarded

- 7.4 For Qualifying Series, scores are based on the number of competitors assigned to the largest fleet in that Series. This changes RRS A5.2.
- 7.5 When racing in heats, a board that did not start, did not sail the course, did not finish, retired or was disqualified will be scored points for the finishing place two more than the number of boards assigned to the largest heat in the Series. This changes RRS A5.2
- 7.6 If at the end of the Qualifying series some boards have more race scores than others, scores for the most recent races will be excluded so that all boats have the same number of race scores.
- 7.7 If no race in the Medal Series is completed, the overall ranking in Opening Series will be established and this shall count as the official result.
- 7.8 When racing in multiple fleets, competitors assigned to Gold fleet will be ranked higher in the regatta than competitors assigned to Silver fleet. This may not apply to a boat disqualified under RRS 6 or 69.
- 7.9 Ties in a split fleet final series are broken in accordance with RRS A8.2. Ties in a split fleet Qualifying series or a single fleet Opening series shall be broken in accordance with RRS A8.
- 7.10 Competitors assigned to compete in the Medal Series will be ranked highest in the event except for a competitor disqualified from a race in the Medal Series under RRS 6 or 69.
- 7.11 There will be no point scoring in the Medal Series. A board's score in a race will be based on her finishing order in that race.
- 7.12 The Medal Series shall not be excluded from a competitor's score neither will the Medal Series races trigger any discards from results in Opening Series.
- 7.13 The fourth to tenth overall ranked boards from the Opening Series shall sail in the Quarter Final race.
- 7.14 The first 2 (two) ranked boards in the Quarter Final race and the second and third overall ranked board from the Opening Series shall advance to the Semi Final. The last 5 boards in the Quarter Final race shall be scored in positions 6<sup>th</sup> to 10<sup>th</sup> in the Event. If no Quarter Final is completed, boards will be ranked according to overall scores in Opening Series.
- 7.15 The first 2 (two) ranked boards in the Semi Final race and the first overall ranked board from the Opening Series shall advance to the Grand Final. The last 2 boards in the Semi Final race shall be scored in positions 4<sup>th</sup> and 5<sup>th</sup> in the Event. If no Semi Final is completed, the winner of the Event is the first overall ranked board from Opening series, the second is the second overall ranked board from Opening series and the third is the third overall ranked board from Opening series, 4<sup>th</sup> and 5<sup>th</sup> will be ranked according to their positions in Quarter Final.
- 7.16 The winner of the Grand Final race is the winner of the Event. The second ranked board shall be scored 2<sup>nd</sup> place and the third ranked shall be scored 3<sup>rd</sup> place in the Event. If no Grand Final is completed, the winner of the Event is the first overall ranked board from Opening series and 2<sup>nd</sup> and 3<sup>th</sup> place will be ranked according to their positions in Semi Final.
- 7.17 If there is a series-score tie between two or more boards, it shall be broken in favour of the board with the better result in the previous stage.

## (NP)(DP) ADDENDUM G.- SUPPORT TEAM VESSELS REGULATIONS

### 1. General

- 1.1. These Support Team Vessels Regulations (shall apply from 09:00 on Saturday April 22<sup>nd</sup> until 12.30 on Saturday 29<sup>th</sup> April).
- 1.2. For the purposes of these regulations, a support Team Vessel (STV) includes any boat that is under the control or direction of a person who is or may provide physical or advisory support to an athlete, including the gathering of data that may be used at a later time.
- 1.3. The Organizing Authority may inspect boats at any time to ensure that they comply with these regulations, and the person responsible for the boat shall facilitate such inspection.
- 1.4. An alleged breach of any of these regulations may be referred to the International Jury for a hearing. As a result of the hearing, the International Jury may instruct the Organizing Authority to withdraw

accreditation and access rights from the offending party, with or without the option of substitution, either for a specified period or for the remainder of the competition. Note : action may be taken under RRS 69.

- 1.5. The Organizing Authority may change these regulations at any time. Any changes will be posted on the Official Noticeboard and circulated to team leaders.
- 1.6. The Organizing Authority may, at its discretion, refuse to register STV not deemed to be suitable. Generally, open boats more than 4.0m and less than 7.5m in length and having minimal or no superstructure (cabin, coach house, bridge, etc) are considered suitable.
- 1.7. STV and designated drivers shall be registered at the Regatta Office **by 12.30 on April 23rd**
- 1.7.1. Each boat shall be insured with valid third-party liability insurance with a minimum coverage of € 300.000 (or equivalent) per incident.
- 1.7.2. Only an accredited support person may be a designated driver.
- 1.7.3. The person registering the STV shall sign to confirm that:
  - he / she holds a valid insurance certificate showing proof of third-party liability coverage as required by 1.7.1;
  - the designated driver has a motorboat driving license recognized by a national authority appropriate to that boat; and anyone who will be using a radio has an appropriate radio operation license recognized by a national authority.
- 1.8. STV shall be marked as follows:
  - 1.8.1. The three-letter NOC code shall be clearly displayed on both sides of the boat in strongly contrasting colors at all times while afloat. The minimum height for the letters shall be 200mm. The letters will not be provided by the Organizing Authority.
  - 1.8.2. A rib identification sticker provided by the Organizing Authority

## **2. Sailing Venue**

- 2.1. STV shall use the designated slipway/area for launching. Once launched, trailers shall be moved immediately to the trailer park or as otherwise directed by the Organizing Authority.
- 2.2. Only STV that will be registered will be allowed into the sailing venue.
- 2.3. When not in use, STV shall be appropriately berthed at the sailing venue in the allocated areas for coach boats for the entire time that these CBR apply.
- 2.4. STV shall not use the dinghy launching slipways or keelboat pontoons for any purpose whatsoever, including mooring, launching and retrieval, and loading and unloading of equipment.

## **3. Safety**

- 3.1. STV shall carry on board:
  - life jackets / buoyancy aid for all passengers and the driver worn at all times when afloat;
  - First-aid kit ;
  - VHF radio ;
  - device for making a sound signal;
  - Compass ;
  - adequate anchor and tackle for conditions and depth;
  - tow rope (minimum 15m long and 10mm thick);
  - operational engine kill cord (also known as a safety lanyard or automatic engine immobiliser);
  - Knife
- 3.2. **It is mandatory that the kill cord is used** at all times when the engine is running.
- 3.3. STV shall never exceed maximum plated / certified passenger limits.
- 3.4. At all times, the registered driver(s) of a STV shall comply with directions given by a Race Official. In particular, this includes assisting in rescue operations when requested to do so.
- 3.5. STV shall comply with local harbour and marina regulations, in particular speed limits.

#### 4. General restrictions

- 4.1. The registered driver(s) of a STV will be responsible for the control of the boat at all times and will be held responsible for any inappropriate behavior, dangerous actions or improper practices, or actions affecting the fairness or safety of competition.
- 4.2. STV shall not leave any device, piece of equipment, buoy, marker or similar item permanently in the water. Temporary use of floating objects is allowed for current measurement. These objects shall be removed as soon as the measurement has been taken.
- 4.3. STV should take particular care to minimize their wash when transiting the course areas.

#### 5. STV Zone

- 5.1. STV shall not be positioned:
  - i. Closer than 150 metres of any boat racing.
  - ii. Within 150 meters of the starting line and marks from the time of the preparatory signal until all boats have left the starting area, or the race committee signals a postponement, general recall or abandonment.
  - iii. Between any boat racing and the next mark of the course.
  - iv. Between the inner and outer trapezoid courses when boats are racing on both courses.
  - v. Within 150 meters of any mark of the course while boats are in the vicinity of that mark.
  - vi. Within 150 meters of the finishing line and marks while boats are finishing.
- 5.2 Additional restrictions apply to Medal Races and will be posted on the official notice board.

## K KITEBOARD FORMAT AND SCORING

The format for will be:

Event	Format	Number of Races
Formula Kite	Opening Series + Medal Series (Semi Finals and Finals)	20 + Medal Series

#### 1 Opening Series

- 1.1 The Opening Series may be divided into phases Q1, Q2 and Q3.

#### 1.2 Opening Series – Phases Q1 and Q2

- a) Phase Q1: On the first day of racing, kiteboards will be assigned to fleets yellow, blue, red etc., of, as nearly as possible, equal size and ability. Assignments will be made by the race committee and will be posted at least 30 minutes before the first warning signal is made. Those assignments will not be grounds for redress. This changes RRS 62.1(a).
- b) Phase Q2: Kiteboards will be reassigned to fleets after each day of racing, except if only one race is completed by all fleets. If all fleets have completed the same number of races, kiteboards will be reassigned on the basis of their ranks in the series. If all fleets have not completed the same number of races, the series scores for reassignment will be calculated for those races, numbered in order of completion, completed by all fleets. For three fleets, and similarly for any other number, reassignments will be made as follows:

First	Men Yellow -Women White
Second	Men Blue-Women Green
Third	Men Pink
Forth	Men Pink
Fifth	Men Blue-Women Green
Sixth	Men Yellow -Women White
Seventh	Men Yellow -Women White

etc.
- c) Reassignments of fleets will be based on the ranking available at 2100 on the day before they take effect, regardless of pending hearings.
- d) If all fleets have not completed the same number of races by the end of a day, the fleets with fewer races will continue racing the following day until all fleets have completed the same number of races. All kiteboards will thereafter race in the new fleets.

- e) If at the end of phase Q2 some kiteboards have more race scores than others, scores for the most recent races will be excluded so that all kiteboards have the same number of race scores.
- f) For phases Q1 and Q2, RRS A5.2 is changed so that the scores are based on the number of kiteboards assigned to the biggest fleet.

### 1.3 Opening Series – phase Q3

If 4 or more races are completed by each fleet at the end of phase Q2:

- a) Kiteboards will be assigned to fleets gold, silver, bronze etc., based on their ranking after phase Q2. There will be the same number of fleets in phase Q3 as there were in phases Q1 and Q2. Q3 fleets will have, as nearly as possible, equal size with the following limitations:
  - Gold Fleet: max 25 kiteboards.
  - Silver Fleet: max 30 kiteboards (or remaining kiteboards if two fleets).
  - Bronze Fleet (if applicable): remaining kiteboards.
  - Kiteboards with the best phase Q2 ranks will race all phase Q3 races in fleet gold, kiteboards with the next-best phase Q2 ranking will race in fleet silver, etc.
- b) Any recalculation of phase Q2 rankings after kiteboards have been assigned to phase Q3 fleets will not affect the assignments except that a redress decision may promote a kiteboard to a higher fleet.

1.4 A kiteboard's Opening Series score will be the total of her race scores except that:

- when from 4 to 6 races have been completed her worst score will be excluded;
- when from 7 to 10 races have been completed her two worst scores will be excluded;
- when 11 or more races have been completed her three worst scores will be excluded;

however, not more than one score from phase Q3 may be excluded when less than five Q3 races have been completed, and not more than two scores from phase Q3 may be excluded when five or more Q3 races have been completed.

This changes RRS A2.

1.5 For the Opening Series overall standings, kiteboards will be ranked in the order of the kiteboards competing in fleets gold, silver, bronze, etc. This may not apply to a kiteboard disqualified under RRS 6 or 69.

## 2 Medal Series

2.1 The Medal Series will be divided into Semi Finals and Finals.

2.2 The first-ranked kiteboard in the Opening Series will qualify to the Finals carrying forward two race-wins.

2.3 The second-ranked kiteboard in the Opening Series will qualify to the Finals carrying forward one race-win.

### 2.4 Semi Finals

- a) Kiteboards ranked 3 to 10 overall in the Opening Series will be assigned to Semi Finals, carrying forward race-wins as follows:

Semi Final 1		Semi Final 2	
Opening Series Position	Race-Wins	Opening Series Position	Race-Wins
3	2	4	2
6	1	5	1
7	0	8	0
10	0	9	0

- b) Each Semi Final will continue until one kiteboard collects three race-wins. The kiteboard with the lowest race score collects a race-win.
- c) Kiteboards in each Semi Final will be ranked in order of the number of race-wins, from highest to lowest.
- d) If there is a tie in race-wins between two or more kiteboards, they will be ranked in the order of their finishing positions in the last race. Any remaining ties shall be broken by using the tied kiteboards' scores in the next-to-last semi-final race and so on. If a tie



remains, they will be ranked in order of their opening series ranking.

This changes RRS A8

- e) The winner of each Semi Final will qualify to the Finals, carrying forward 0 race-wins.
- f) The race committee may cancel the Semi Finals if the completion of the Medal Series is in jeopardy. In such case, competitors ranked 3 and 4 in the Opening Series will qualify to the Finals.

## 2.5 Finals

- a) The Finals will continue until one kiteboard collects three race-wins. The kiteboard with the lowest race score collects a race-win.
- b) Kiteboards in the Finals will be ranked in order of the number of race-wins, from highest to lowest.
- c) If there is a tie in race-wins between two or more kiteboards, they will be ranked in the order of their finishing positions in the last race. Any remaining ties shall be broken by using the tied kiteboards' scores in the next-to-last finals race and so on. If a tie remains, they will be ranked in order of their opening series ranking.

This changes RRS A8

## 2.6 Scores in the Medal Series determined by the race committee.

A kiteboard that came to the starting area but did not start or did not finish will be scored points for the finishing place one more than the number of kiteboards that finished and were not disqualified or retired. This changes RRS A5.

## 3 Overall Standings.

This may not apply to a kiteboard disqualified under RRS 6 or 69.

- 3.1 Kiteboards qualified for the Finals will be ranked in places 1-4, even if the Finals are not completed.
- 3.2 Remaining kiteboards in the Semi Finals will be ranked in places 5 to 10 according to their scores in the Semi Final flights as follows:
  - Competitors ranked 2<sup>nd</sup> in each Semi Final will be ranked in places 5 and 6 in order of their Opening Series ranking.
  - Competitors ranked 3<sup>rd</sup> in each Semi Final will be ranked in places 7 and 8 in order of their Opening Series ranking.
  - Competitors ranked 4<sup>th</sup> in each Semi Final will be ranked in places 9 and 10 in order of their Opening Series ranking.

If the Semi Finals are not completed, kiteboards will be ranked in order of their Opening Series ranking.

- 3.3 Kiteboards not qualified for the Medal Series will be ranked from place 11 and on, according to their Opening Series score. This changes RRS A2.
- 3.4 Kiteboards in fleet gold will be ranked in front of kiteboards competing in subsequent fleets etc.

# ADDENDUM FMS

## KITEBOARDING MEDAL SERIES

*(Version 28 March 2023) – This addendum applies to all medal series races and all pre-race or post-race activities related to them. The rules of this addendum override any conflicting rules in the notice of race and the sailing instructions. This changes rule 63.7.*

### FMS 1 CHANGES TO RULES INVOLVING PROTESTS, REQUESTS FOR REDRESS, PENALTIES AND EXONERATION

- FMS 1.1 Rule F5 is deleted.
- FMS 1.2 Rule 60.1 is replaced with 'A kiteboard may protest another kiteboard or request redress provided she complies with rules FMS 3.1 and FMS 3.6
- FMS 1.3 Rules 62.1(a), (b) and (d) are deleted.

### FMS 2 SCORING INFORMATION

- FMS 2.1 At the finishing line, the race committee will display each kiteboard's finishing place or score in the race, together with flag B and one sound. The scoring information and flag B will be displayed for one minute and removed with one sound.
- FMS 2.2 When the race score of a kiteboard may be different than her finishing position, the race committee shall display a yellow flag on the finishing area before flag B is removed.

FMS 2.3 If the race committee changes the scoring information while it is displayed, it will display flag L with one sound. The scoring information and flag B will continue to be displayed for one minute after any changes are made.

### FMS 3 PROTESTS, REQUESTS FOR REDRESS AND PENALTIES

FMS 3.1 While racing, a kiteboard may protest another kiteboard under a rule of Part 2, except rule 14, but only for an incident in which she was involved, or under rule 31. To do so she shall hail 'Protest' and conspicuously raise one arm at the first reasonable opportunity for each. This changes rules 60.1 and 61.1.

FMS 3.2 A kiteboard involved in the incident may acknowledge breaking a rule by promptly taking a One-Turn Penalty in accordance with rule 44.2.

#### FMS 3.3 UMPIRED RACES

FMS 3.3.1 A kiteboard that protests as provided in rule FMS 3.1 is not entitled to a hearing. An umpire may penalize any kiteboard that broke a rule and was not exonerated, unless the kiteboard took a voluntary penalty. This changes rule 63.1.

FMS 3.3.2 When a kiteboard

- (a) breaks rule 31 and does not take a penalty, or
  - (b) gains an advantage despite taking a penalty, or
  - (c) deliberately breaks a rule, or
  - (d) commits a breach of sportsmanship,
- an umpire may penalize her without a protest by another kiteboard.

FMS 3.3.3 (a) When the umpires decide that a kiteboard has broken a rule, they will apply a penalty of 1.1 points to the kiteboard. This shall not change the score of the other kiteboards.

(b) If the kiteboard caused injury, serious damage or a tangle or, despite taking a penalty, gained a significant advantage or caused significant disadvantage to the other kiteboard in the race or series by her breach, the kiteboard will be disqualified

(c) The umpires may report the incident to the protest committee for further action.

FMS 3.3.4 The umpire decisions will be reflected in the race scores displayed by the race committee as per FMS 2.1.

FMS 3.4 NOT UMPIRED RACES  
FMS 3.4.1 This rule applies when the race has not been umpired. Rule FMS 3.3 does not apply. To signal that a race has not been umpired, the race committee will display flag P on the finishing vessel.

FMS 3.4.2 Protests and requests for redress need not be in writing. The protest committee may schedule the hearing, inform the parties of the time and place of the hearing, take evidence, conduct the hearing, and communicate its decision in any way it considers appropriate, which may be orally. This changes rules 61.2, 62.2, 63 and 65.

FMS 3.5 A kiteboard intending to

- (a) protest another kiteboard when FMS 3.4 applies,
  - (b) protest another kiteboard under a rule other than rule 28, or a rule listed in FMS 3.1,
  - (c) protest another kiteboard under rule 14 if there was contact that caused damage, injury or a tangle, or
  - (d) request redress,
- shall hail the race committee during the display of flag B except that if a kiteboard does not finish a race, she may notify her hearing request to any official boat before the removal of flag B.

This changes rules 61.1 and 61.3

FMS 3.6 (a) When the race committee receives a notification of protest, it will promptly inform the protest committee. The hearing will start at the protest committee station within five minutes unless the protest committee decides otherwise.

(b) If no protest or request for redress is received when flag B is removed, the race committee will display a green and white flag with one sound.

FMS 3.7 If the protest committee decides that a breach of a rule has had no effect on scoring a race-win, it may postpone the hearing or make any arrangement it decides is equitable.

FMS 3.8 For protests under rule FMS 3.4,

(a) When the protest committee decides that kiteboard has broken a rule, they will apply a penalty of 1.1 points to the kiteboard

(b) If the kiteboard caused injury, serious damage or a tangle or, despite taking a penalty, gained a significant advantage or caused significant disadvantage to the other kiteboard in the race or series by her breach, the kiteboard will be disqualified

FMS 3.9 After making its decision, the protest committee will display any penalties imposed or redress given together with flag L and one sound.

#### FMS 4 REQUESTS FOR REOPENING; APPEALS; OTHER PROCEEDINGS

FMS 4.1 No proceedings of any kind may be taken in relation to any action or non-action by an umpire.

FMS 4.2 A kiteboard may not base an appeal on an alleged improper action, omission or decision of the umpires or the protest committee. This changes rule 70.1.

Rule 66.2 is replaced with 'A hearing shall not be reopened based on a request of a *party* to that hearing.'

FMS 4.3 The race committee will not protest a boat.

FMS 4.4 The protest committee may protest a boat under rule 60.3. However, it will not protest a boat for breaking a rule listed in rule FMS 3.1, or rule 14 unless there is damage, injury or tangle.

FMS 4.5 The technical committee will not protest a kiteboard, except under rule 60.4 when it decides that a boat or personal equipment does not comply with the class rules, rule 50, or the rules in the equipment regulations of the event, if such exist. In such a case, the technical committee shall protest. The time limit for protests under this rule is the same as in rule FMS 3.5. The protest committee shall extend the time limit if there is a good reason to do so.